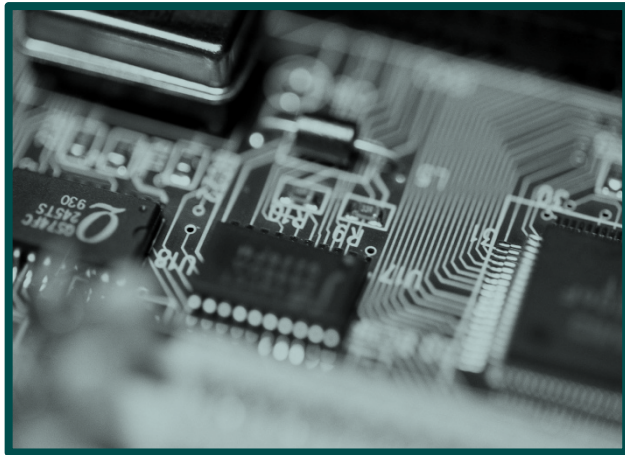




## 2010 Company Overview



The logo for Topview Systems LLC features the company name in a bold, sans-serif font. The word "TOPVIEW" is significantly larger than "SYSTEMS LLC". A stylized graphic of a globe with a green sphere at the top and a black swoosh below it is positioned to the right of the text.

# TOPVIEW

SYSTEMS LLC

Topview prides itself on deep technical and managerial experience and an unwavering commitment to quality and integrity.

- Corporate Headquarters: Oldsmar, FL
- Established in 2009
- Fulltime Staff of 60
- Expertise in Aerospace, Defense & Government solutions
  - Responsive Engineering™
    - Staff Augmentation
    - Managed Solutions
  - Responsive Enterprise™
    - Custom Development
    - Product Solutions
- SDVOSB option available

## *Responsive Engineering™ Managed Solutions*

- **Avionics Systems Development**
  - Flight systems engineering design
- **Test and Support Systems**
  - Infrastructure for aerospace and defense
  - Innovative solutions for legacy systems
- **Integrated Logistics Support**
  - Product development lifecycle
  - Support the extended enterprise
  - Data intensive
  - Supporting products





## Capabilities

### *Responsive Engineering™ Staff Augmentation*

- Fast fulfillment
- We support our customers' surge requirements
- Our customers want to avoid adding to their full-time workforce
- We understand the Aerospace Prime environment
- We have a national pool of qualified staff to draw talent



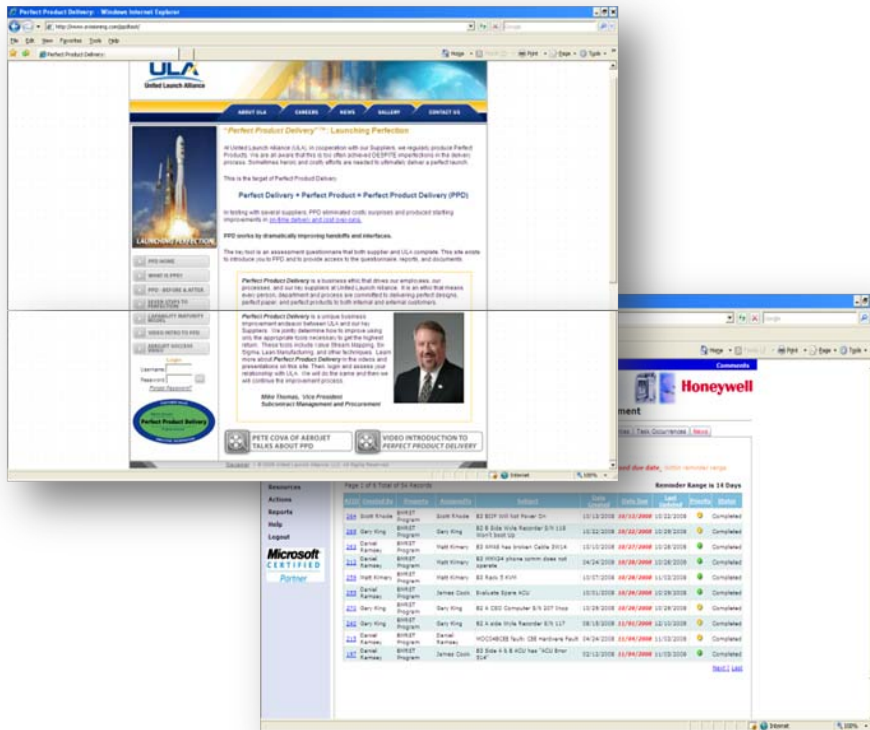
# TOPVIEW

SYSTEMS LLC

## Capabilities

### *Responsive Enterprise™*

- eVisioning
  - Asset and maintenance management tool
    - defense product management
    - airport maintenance operations (*features provided on next slide*)
- Perfect Product Delivery (PPD)
  - Supporting the extended enterprise for development and deployment





## Capabilities

### *Responsive Enterprise™*

#### Integrated Solution Development

- DO178/254 PDLC Tools and Process
- Management Support
- CMMI Process Consulting
- Risk Management Consulting
- Program Management (PMI) Consulting
- Product Planning and Control
- Enterprise IT Consulting



## Government Systems Experience

- **Test Systems – Systems, HW, SW**
  - Space-based guidance components
  - Launch vehicle G&N – Actuator Simulation
  - Ground based G&N
  - Shuttle MEC and MDM
  - Mobile Range and Telemetry
  - Re-entry vehicle test station
- **IV&V – Flight Software**
  - Launch Vehicles
  - Space Shuttle Main Engine Controller
  - Mobile Range and Telemetry
- **Flight Software Development**
  - Satellite C&DH and Payload processing
  - Mobile Range and Telemetry
  - Launch Vehicle G&N
- **Flight Hardware Development**
  - Radar Display Computer
  - Satellite Computer
- **Software/Systems Tools and Processes**
  - CMMI Process Consulting
- **Modelling and Simulation**
  - G&N
  - Target Recognition
  - Mine detection math modelling
  - Combat Patient Trauma Simulation
  - Launch Actuator Simulation
- **Integrated Logistics and Support**
  - Computerized Maintenance Management Systems
  - Information Systems support – Tank Engine Health Data
  - Tech Manuals
  - Training
  - COTS to Government (Fire Suppression Systems)



## Experience

### Commercial Systems Experience

- Flight Controls Circuit Breaker Interface Console Development (787)
- Flight Systems IV&V (B787)
- Flight Displays (B737)
- Human Simulation Systems
- Computerized Maintenance Management Systems
- Human Resources Decision Support System
- Database Management Solutions Enterprise Portal for Event Management
- Airport Maintenance Management
- Strategic – Customer/Supplier Alignment – consulting
- Remote Telemetry Systems – water monitoring
- IT Services (State and Local Government)
  - Content Management
  - Document Services
  - Data Housing





# TOPVIEW

SYSTEMS LLC

## People & Tools

- In-house pool of project managers and lead engineers, many with 15-25 yrs experience in Aerospace
- In-house recruiting and nationwide network of recruiting agencies
- The right tools and processes:

- PMI / EVM
- AS9100 QMS
- DO-178B
- DO-254
- DO-160
- Lean Six Sigma
- ITAR Processes
- Facility Security Clearance
- ESD Certs & Lab
- .NET tools
- ICMS – FAA PDLC Tool

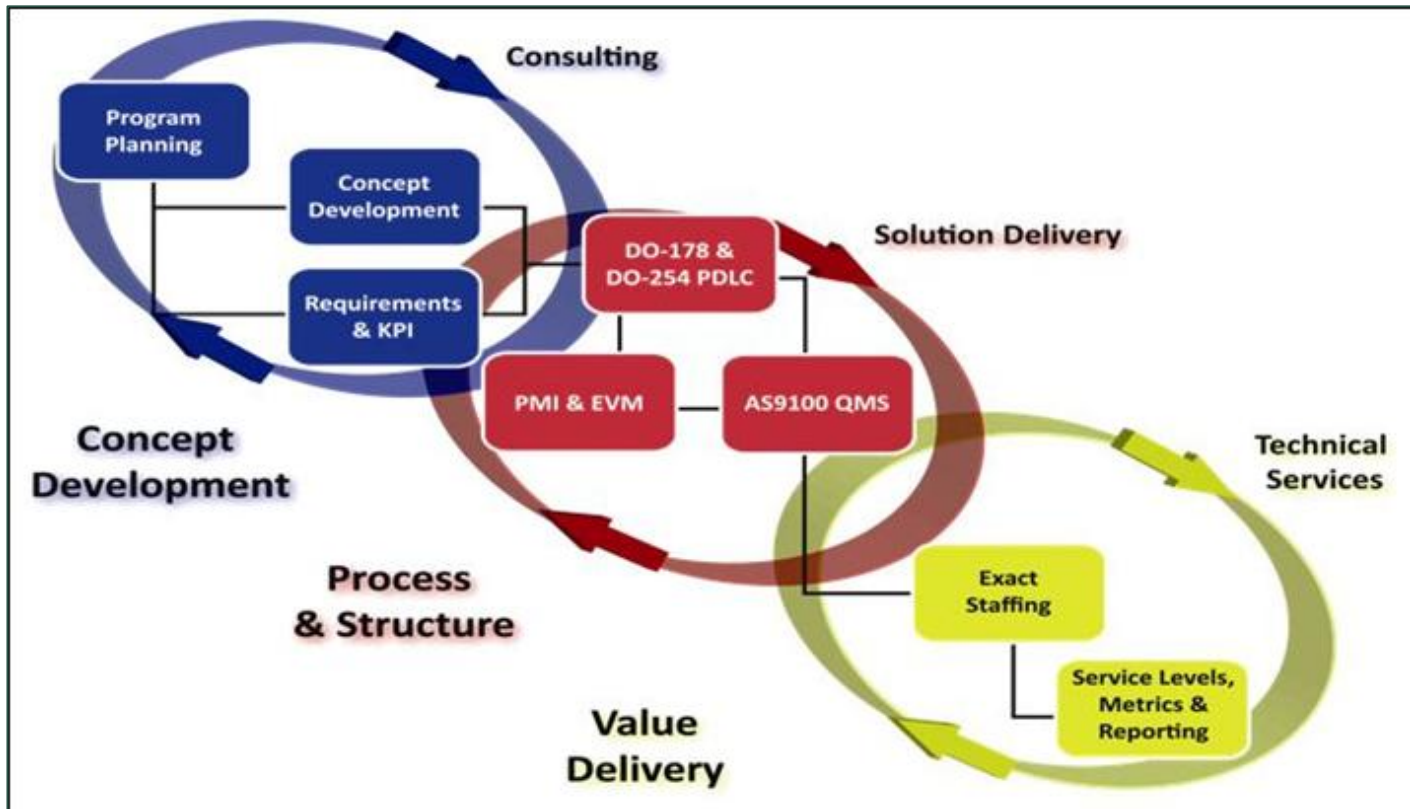
- Exchange 2003/2007 – 64 bit
- MOSS 2007
- VMWare EBX 3.5
- SQL Server 2005
- Visual Studio (team edition 2008)
- Apache 2.0

- LabView
- MS Dynamics CRM 4.0
- Autocad/Orcad
- Inventor
- Solid Works
- Eagle Layout
- Front Panel Designer
- Adobe Acrobat 3D
- Pro E
- MATLAB
- Pic Basic
- 3D Studio

- AutoDesk Viz
- Adobe Illustrator
- Adobe Photoshop
- Visio
- Subversion
- Trac
- MS Live Communication Server
- MS System Center Operation 2007
- MS Team Foundation Server
- MS Server 2008 Enterprise – 64 bit

## Enhancing Customer Value

We ensure our customer receives the best value by utilizing a process that combines consulting, solution delivery, and technical services.





## Solution Realization Process

- Fully committed and compliant with industry standard for quality product and service realization

- We follow the Aerospace AS9100 quality standards
  - With the help of our major partner, Tandel Systems
  - PM and contract processes/controls
  - Subcontract and material management processes/controls
  - Equipment and facilities processes/controls
- Our engineering HW & SW Life Cycle Process
  - DO-178B for all software projects
  - DO-254 for all hardware projects

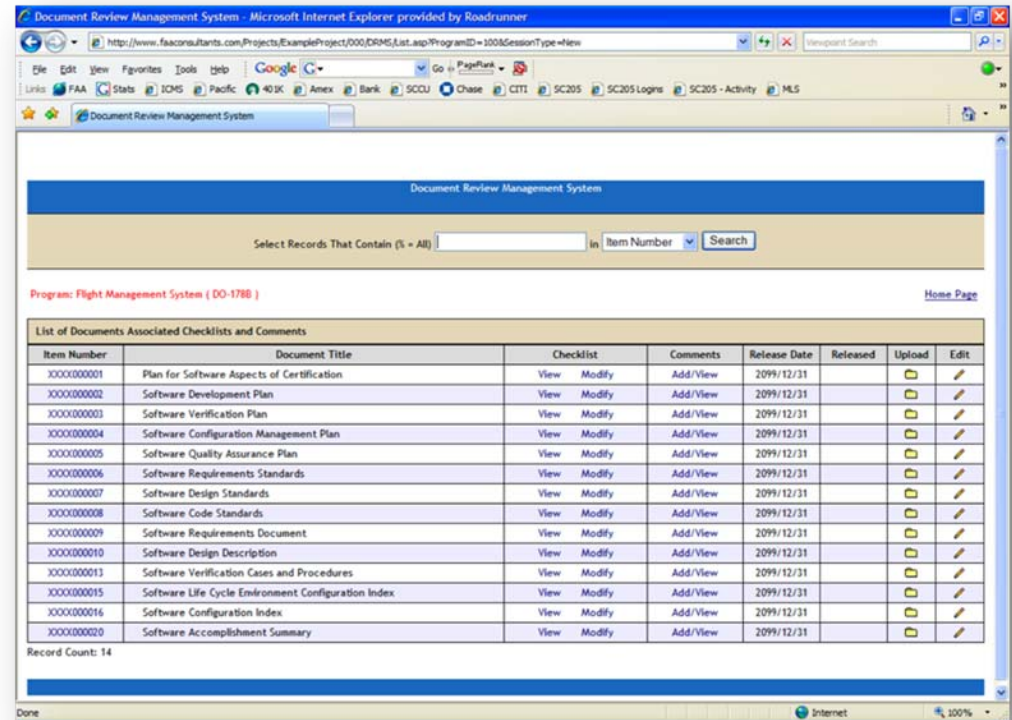


## HW & SW Lifecycle Process

- Process is key to meeting customer and internal management expectation

- All benefit from the Discipline and Predictability DO-178B and DO-254 bring to projects
  - Define the Requirements – get customer & management concurrence
  - Design to the Requirements – get customer & management concurrence
  - Code or Implement the Design – get customer & management concurrence
  - Verify the Design to the Requirements – get customer & management concurrence

All project artifacts are created, configured, controlled, and tracked automatically when the project is set up within our tools.



Document Review Management System

Select Records That Contain (s - All)  in Item Number

Program: Flight Management System ( DO-178B ) [Home Page](#)

List of Documents Associated Checklists and Comments

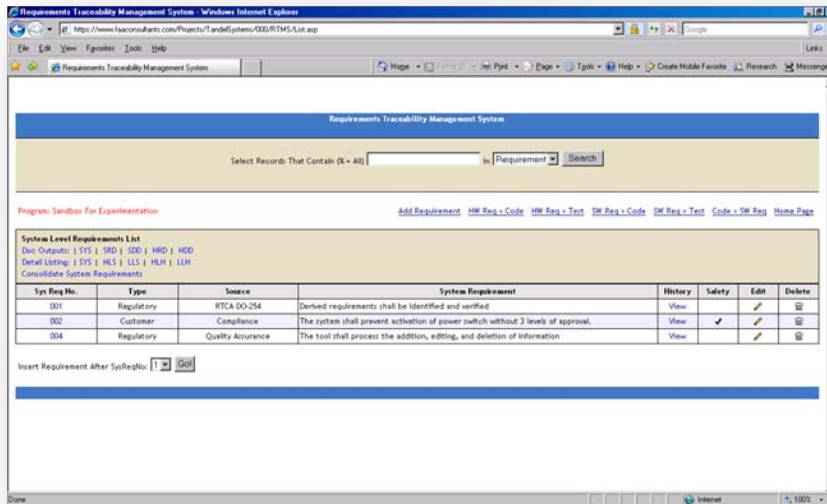
Item Number	Document Title	Checklist	Comments	Release Date	Released	Upload	Edit
XXXX000001	Plan for Software Aspects of Certification	View	Modify	Add/View	2099/12/31		
XXXX000002	Software Development Plan	View	Modify	Add/View	2099/12/31		
XXXX000003	Software Verification Plan	View	Modify	Add/View	2099/12/31		
XXXX000004	Software Configuration Management Plan	View	Modify	Add/View	2099/12/31		
XXXX000005	Software Quality Assurance Plan	View	Modify	Add/View	2099/12/31		
XXXX000006	Software Requirements Standards	View	Modify	Add/View	2099/12/31		
XXXX000007	Software Design Standards	View	Modify	Add/View	2099/12/31		
XXXX000008	Software Code Standards	View	Modify	Add/View	2099/12/31		
XXXX000009	Software Requirements Document	View	Modify	Add/View	2099/12/31		
XXXX000010	Software Design Description	View	Modify	Add/View	2099/12/31		
XXXX000013	Software Verification Cases and Procedures	View	Modify	Add/View	2099/12/31		
XXXX000015	Software Life Cycle Environment Configuration Index	View	Modify	Add/View	2099/12/31		
XXXX000016	Software Configuration Index	View	Modify	Add/View	2099/12/31		
XXXX000020	Software Accomplishment Summary	View	Modify	Add/View	2099/12/31		

Record Count: 14

All project information and tools are available to all project team members through secure web (SharePoint) interface.



- All System, High Level (HW or SW allocation), and Low Level (Design) Requirements are captured and controlled in automation tools
- SysRD, SRD, HRD, SDD, and HDD 50% auto generated from tools
- Traceability from requirements to verification results automated by tools





# TOPVIEW

SYSTEMS LLC

## Review & Analytics Automation

- All reviews are web based, designed to assure compliance, capture attendance and record approvals
- Coverage analysis analytics built-in



The logo for Topview Systems LLC features the company name in a bold, sans-serif font. The word "TOPVIEW" is significantly larger than "SYSTEMS LLC". A stylized graphic of a green sphere with a white highlight is positioned above the letter 'V' in "TOPVIEW". Below the text, there are two curved lines: a dark green one on top and a black one on the bottom, both curving around the text from the left side.

# TOPVIEW

SYSTEMS LLC

## Why Topview Systems?



*We offer deep technical and managerial experience and an unwavering commitment to quality and integrity.*

- Consultative approach to solutions
- Fast
- Flexible
- Innovative
- Cost-effective
- Qualified people, processes and tools



**TOPVIEW**  
SYSTEMS LLC

**Corporate Headquarters**

3982 Tampa Road  
Oldsmar, FL 34677  
Tel 727-530-1110  
Fax 727-530-1210

**Phoenix Office**

17235 75th Avenue, Suite C-170  
Glendale, AZ 85308  
Tel 623-215-4230  
Fax 623-215-4132

**INDUSTRY CODES**

<b>INDUSTRY CODES</b>	
<b>DUNS</b>	<b>831732925</b>
<b>NAICS (primary)</b>	<b>541512</b>
<b>NAICS (secondary)</b>	<b>541330, 519190, 541511, 541519, 541618, 541611, 611710, 611430, 927110</b>